



MARCI

MARINE S.A.

G L O B A L S H I P P I N G S E R V I C E S

Provisions & Bonded Stores

Technical Stores

Technical & Repair Services

Marine Valves

Lashing Materials

Logistics

Customs Clearance

Warehouse Safekeeping

CTM





ABOUT US

MARGI MARINE S.A. is a high edge marine services provider for merchant vessels, ranging from multipurpose vessels to bulk carriers, containers, oil tankers and LPG carriers trading globally. With a significant worldwide network of suppliers, we cover all possible ports of call, ensuring the delivery of supplies at the most competitive prices and the minimum delivery time.

OUR VALUES

We are proud of being capable covering every need and exceeding your highest expectations:

- **Prompt-efficient Service.**
- **Competitive Prices.**
- **Strict Quality Control.**
- **24X7 Service and Back up**



OUR COMMITMENT

We understand that we are here to fulfill our customers' requirements or desires, no matter how small or large.

The same care and professionalism is taken each and every time.

MARGI MARINE is dedicated to people and customers, committed to excellence in service and with a management team who are passionate about what they do and how they do it.

OUR PEOPLE

We have well-trained and experienced staff, capable of dealing with the intricacies of Ship Chandling, thereby ensuring that the customers needs and requirements are fully met and understood.



PROVISIONS & BONDED STORES

We supply a vast range of provisions including frozen meats and fish, dairy products, chilled products, long-life products, various beverages, and fresh vegetables, which have been sourced from around the world and are properly packaged and labelled.



NEW BUILDING SHIP STORES

We supply the initial marine stores required by newly built vessels in shipyards around the globe including Japan, China and Korea.



TECHNICAL STORES

CABIN STORES

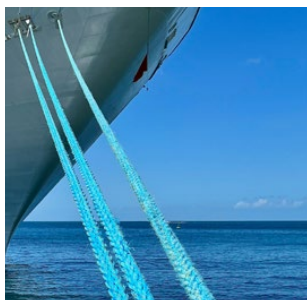
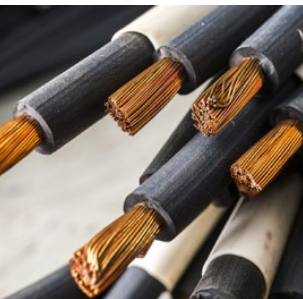
- Brushes & Mats
- Cleaning Material
- Clothing Products
- Linen Products
- Lavatory Equipment
- Kitchenware and Tableware Utensils
- Galley Utensils
- Hardware

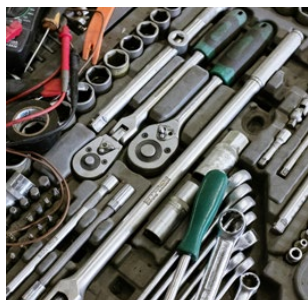
ELECTRICAL STORES

- Battery
- Cables
- Lamps
- Lighting Fixtures
- Plugs & Sockets
- Torch

ROPE & HAWSER & RIGGINGS EQUIPMENTS

- Mooring Ropes
- Mooring tales
- Mooring wire ropes
- Mooring deck equipment
- Wire Ropes
- Anchor
- Anchor Chain
- Chains & Links
- Shackles
- Turnbuckles
- Wire Clips





DECK STORE

- Deck Equipment
- Cargo Equipment
- Bridge Equipment
- Hose & Coupling
- Brushes
- Petroleum Products
- Oil Pollution Equipment
- Safety Protective Gear

NAUTICAL EQUIPMENT

- Charts Room Materials
- Flags
- GMDSS Radio Equipment
- Nautical Recording Paper
- Office Consumables
- Publication & Charts

SAFETY EQUIPMENT

- Breathing Apparatus
- Chemical & Gas Protection Suit
- Fire Fighting Equipment
- Life Boat & Life Raft Accessories
- Safety Lights
- Safety Signs

ENGINE STORE

- Bearings
- Cutting Tools
- Hand Tools
- Measuring Tools
- Metal Sheets & Bars
- Packing & Jointing
- Pipes & Tubes & Fittings
- Electrical Tools
- Pneumatic Tools
- Screws & Nuts
- Valves & Clocks
- Welding Equipment

ANTIPIRACY EQUIPMENT

- Razor Wire
- Ballistic Vest
- Helmet
- Night Vision Binoculars

MEDICINE

- Medicine, medical consumables & equipment.

MARINE PAINT & PAINTING EQUIPMENT

MARINE CHEMICALS

SPARE PARTS



TECHNICAL & REPAIR SERVICES

We provide new ship building stores and specialize in the service of spare parts including: replacement pumps, turbochargers, engines and air compressors.



MARINE VALVES

We can serve our customers with an extensive & comprehensive stock of typical marine valves. All of our products meet the JIS and DIN standards and they are certified by DNV-GL Class society. Our broad product range includes all types of bronze, cast steel and cast-iron marine valves. They are being manufactured by DNV-GL, ABS, NK, BV & LR Class approved manufacturers.

JIS VALVES

- **Bronze valves** [Globe Type , Angle Type , Gaze Type , Self Closing Type, S Type]
- **Forged steel valves** [Globe Type , Angle Type]
- **Globe valves** [Cast Iron , Cast Steel]
- **Angled valves** [Cast Iron , Cast Steel]
- **Gate valves** [Cast Iron Valves , Cast Steel Valves]
- **Storm valves** [Vertical Pattern , Angle Pattern]
- **Hose valves** [Globe Type , Angle Type]
- **Quick closing valves** [Globe Type , Angle Type]
- **Butterfly valves** [Wafer Type , Lug Type , Flanged Type]

DIN VALVES

- **Globe valves** [Dustile Iron Group (Ggg.40.3) ,Cast Steel Group (Gsc.25)]
- **Angle valves** [Dustile Iron Group (Ggg.40.3) , Cast Steel (Gsc.25)]
- **Gate valves** [Dustile Iron Group (Ggg.40.3.)]
- **Storm valves** [Vertical Pattern , Angle Pattern]
- **Butterfly valves** [Flanged Type , Lug Type]

DOUBLE ECCENTRIC VALVES

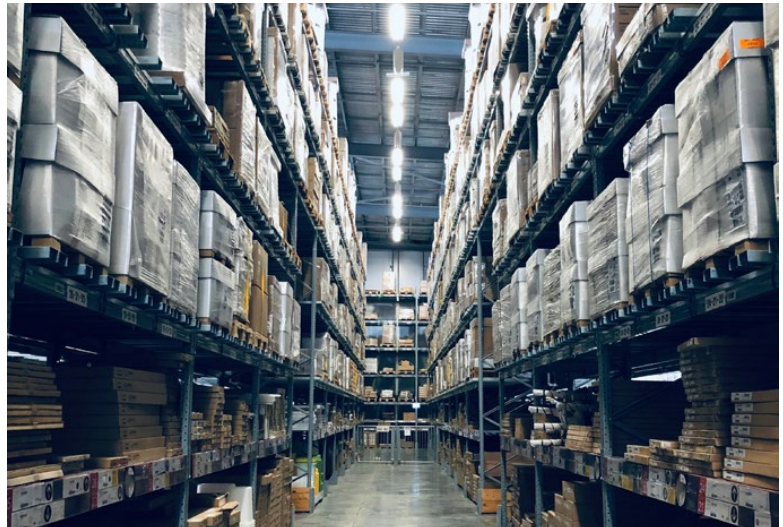
- **High Performance**
- **Cargo oil**





LASHING MATERIALS

We provide a full range of high-quality lashing materials such as durable lashing belts, chains, tensioners, turnbuckles, and other accessories to ensure the safe and secure movement of goods, minimizing cargo shifting, protecting both the load and the vessel during sea transit.

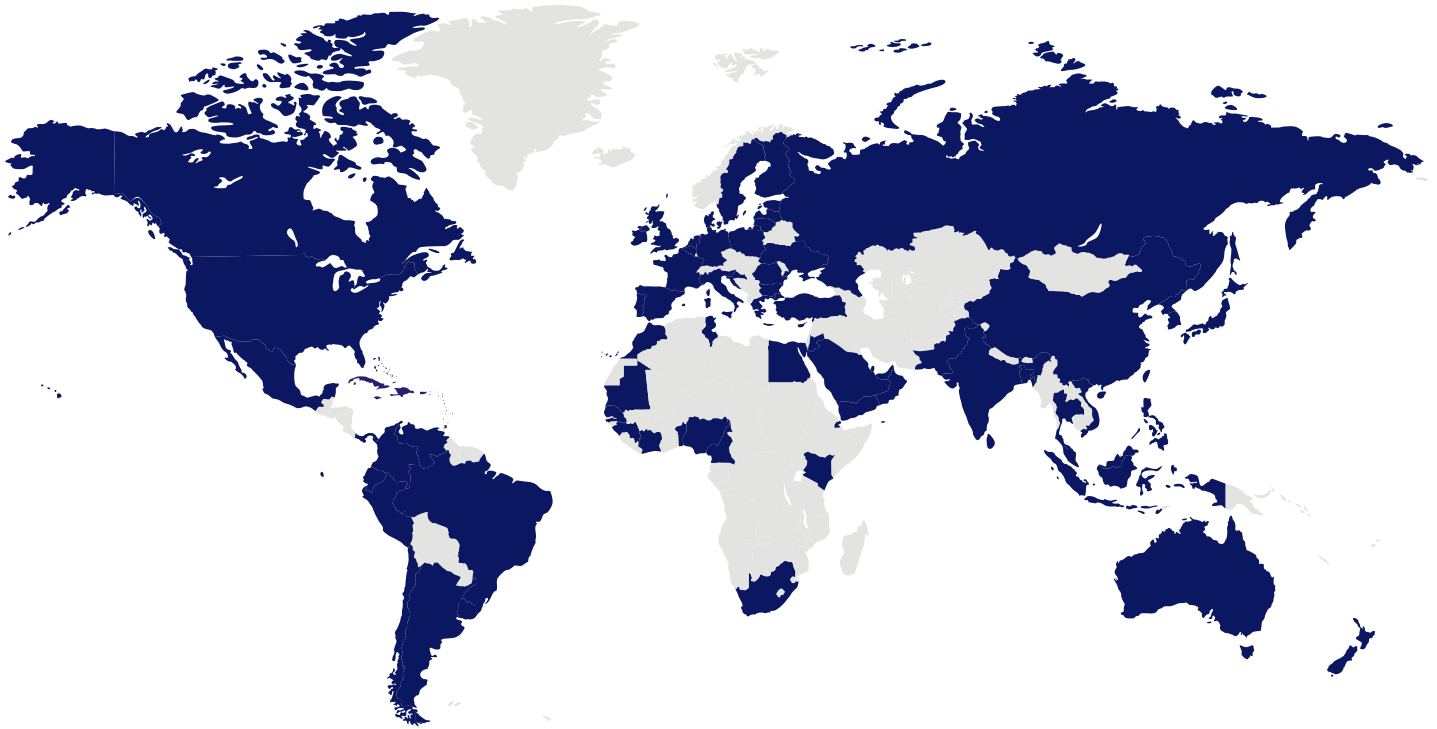


LOGISTICS

Services designed to manage every aspect of your vessel's supply chain. From global coordination of ship spare parts in transit to customs clearance and port delivery, we ensure 24/7 support. Our expertise extends to warehousing, inventory management, and the safe consolidation of spare parts, helping reduce costs and delivery time.

WAREHOUSE SAFEKEEPING

Secure and reliable storage solutions, ensuring that your critical parts, supplies, and equipment are readily available when needed. Our facilities, with climate-controlled environments and specialized storage systems, are strategically located near major ports, offering easy access and efficient logistics coordination. We also offer comprehensive inventory management services, utilizing advanced tracking systems that allow you to monitor your stored goods in real-time.



GLOBAL NETWORK

MARGI MARINE S.A. is co-operating with the most reputable shipping companies giving us the advantage to provide quality services globally, with the most competitive prices. As a leading ship agent we pride ourselves on delivering expert care to each and every vessel and offshore location, also providing CTM services.

EUROPE: BELGIUM | BULGARIA | CANARY ISLANDS | CROATIA | CYPRUS | DENMARK | ESTONIA | FINLAND | FRANCE | GERMANY | GIBRALTAR | GREECE | IRELAND | ITALY | LATVIA | LITHUANIA | MALTA | NETHERLANDS | POLAND | PORTUGAL | ROMANIA | RUSSIA | SLOVENIA | SPAIN | SWEDEN | UKRAINE | UNITED KINGDOM

ASIA: BAHRAIN | BANGLADESH | CHINA | HONG KONG | INDIA | INDONESIA | ISRAEL | JAPAN | JORDAN | KOREA | KUWAIT | MALAYSIA | OMAN | PAKISTAN | PHILIPPINES | QATAR | SAUDI ARABIA | SINGAPORE | SRI LANKA | TAIWAN | TURKEY | THAILAND | UNITED ARAB EMIRATES | VIETNAM | YEMEN

NORTH AMERICA: CANADA | U.S.A.

CENTRAL & SOUTH AMERICA: ARGENTINA | ARUBA | BRAZIL | CHILE | COLOMBIA | CURACAO | ECUADOR | MEXICO | PANAMA | PERU | URUGUAY | VENEZUELA | WEST INDIES

AFRICA: BENIN | CAMEROON | DJIBOUTI | EGYPT | IVORY COAST | KENYA | MAURITIUS | MOROCCO | NIGERIA | SENEGAL | SOUTH AFRICA | TOGO | TUNISIA

OCEANIA: AUSTRALIA | NEW ZEALAND | TASMANIA

